



2025 SPRING CAMP

May 20 - June 15, 2025

Gateway Skating Club is committed to an environment that fosters personal growth & development of our members.

Mill Woods Rec Centre
7207 - 28 Avenue

The Meadows Rec Centre
2407 - 17 Street

Kinsmen Twin Arenas
1979 - 111 Street

GENERAL INFORMATION

The Spring skating camp runs from May 20 to June 15, 2025.

LATE FEE: A late fee of \$75 will be charged after April 18, 2025 (end of day)

Check our Events Calendar frequently for changes/adjustments/events. Follow us on Instagram/Facebook to stay up to date!

Gateway SC will pay for coaches' expenses (transportation, meals & accommodation) for selected competitions.

No make-up sessions are offered due to absences.

- ▶ Hourly skaters may make up a session if cancelled by the club - arranged through base coach.

Private / Semi-Private lessons are charged separately (contact your base coach).

Payment information / options are found on the registration form (online).

There will be no refunds in the event that skating is canceled due to facility failure or club events.

Refund Policy:

- ▶ Account adjustments will be considered for a serious medical circumstances (with a medical certificate).
- ▶ Any other requests (e.g., transfers, retiring, etc) must be requested in writing, which will be subject to a cancellation penalty of one month's ice fee.
- ▶ A \$25 admin fee will apply to all requests
- ▶ All fundraising commitments must be fulfilled and volunteer commitment charges will be applied.



PROFESSIONAL COACHING STAFF

The Gateway Skating Club has a professional team of coaches who work together to ensure that all skaters achieve personal excellence. Visit our website to find more information about our coaches.



Heather Heide
National Certified
nationalcoach.heather@gmail.com



Shelley Douglas
National Certified
shelley@edgeahead.ca



Nathan Chung
Provincial Certified
nathann1600@gmail.com



Nicole Houle
Provincial In-Training
niconicoleh22@gmail.com



Amanda Dutton
Regional Certified
amandadutton@shaw.ca



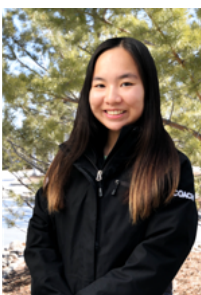
Christine Lirette
Regional Certified
crlirette@gmail.com



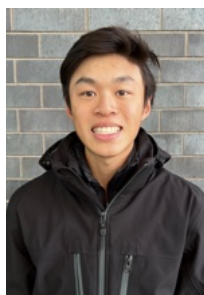
Alysha Gill
Regional Certified
alyshagill.98@gmail.com



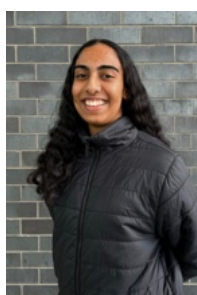
Emily Vreugde
Regional Certified
evreugde@shaw.ca



Julia Chua
Regional Certified
julia_chua_888@hotmail.com



Anson Chung
Regional Certified
ansonxochung@gmail.com



Chetna Grewal
Regional Trained
chetnagrewal6@gmail.com

Please contact coaches directly to inquire about lesson rates and availability.
If you are new to private lessons, please contact Heather Heide at nationalcoach.heather@gmail.com.

PACKAGES & PRICING

CATEGORY	DAYS	HRS	TOTAL	QUALIFICATIONS
Senior	Monday 4:15-6:15 pm	1.75	\$63.00	Juvenile - Senior / STAR 6 - GOLD
	Tuesday 4:00-6:30 pm	2.25	\$108.00	
	Wednesday 4:00-5:55 pm	1.75	\$84.00	
	Thursday 4:30-6:30 pm	1.75	\$84.00	
	Friday 5:00-7:15 pm	2	\$96.00	
	Saturday 5:45-7:45 pm	1.75	\$84.00	
Senior - MUST CHOOSE MINIMUM OF 4 DAYS				
Intermediate A&B	Monday 5:15-7:15 pm	1.75	\$63.00	Intermediate A - Pre-Juvenile Intermediate B - Star 4 - 5
	Tuesday 4:15-6:30 pm	2	\$96.00	
	Thursday 4:00-6:15 pm	2	\$96.00	
	Friday 4:45-6:45 pm	1.75	\$84.00	
	Saturday 5:30-7:30 pm	1.75	\$84.00	
	Intermediate - MUST CHOOSE MINIMUM OF 4 DAYS			
Junior	Monday 4:30-6:30 pm	1.75	\$78.75	Star 1 - 3
	Wednesday 4:45-6:30 pm	1.5	\$90.00	
	Friday 4:00-6:00 pm	1.75	\$105.00	
	Saturday 4:00-6:15 pm	1.75	\$105.00	
Junior - MUST CHOOSE MINIMUM OF 3 DAYS				
Star O12 & Adult	Tuesday 5:45-7:15 pm	1.25	\$60.00	Star 1 - 6 AND 12+ years old
	Thursday (O12 A) 4:00-6:15 pm	2	\$96.00	
	Friday 7:15-8:00 pm	0.75	\$36.00	
Over 12 yrs old - NO MINIMUM DAYS REQUIRED				
Open	Thursday 3:00-4:00 pm	1	\$48.00	All Categories
	Friday 6:30-7:30 am	1	\$48.00	
Additional DAY & MORNING ICE session for all categories				

*Locations - see schedule

Note: Monday (3 sessions), Tuesday, Wednesday, Thursday, Friday, Saturday (4 sessions)

- ▷ Packages include all on and off ice sessions and group classes scheduled on each day.
- ▷ Skaters not registering for a Package may purchase hourly at the discretion of the Director. See prices below.
- ▷ Additional family members receive 15% discount (members only).
- ▷ Associate and Non-Members add 15% (packages only).

HOURLY

Hourly	per hour	\$20.00
--------	----------	---------

*Sessions/classes will be based on availability and must be approved by the Director

NOTES

- ▷ Prior to registration, approval for your schedule/category is required from your coach.
- ▷ Register by April 18, 2025 (end of day).
- ▷ Register online through your Uplifter account at www.gatewayskatingclub.org.
- ▷ Schedules are subject to change. GSC reserves the rights to cancel / adjust sessions without notice.
- ▷ Check our Events Calendar frequently for changes/adjustments/events. Follow us on Instagram/Facebook to stay up to date!



REGISTRATION OPENS

- ▷ March 19, 2025 (at noon) **For full package skaters (choosing minimum days)**
- ▷ March 24, 2025 (at noon) **For part-time / hourly skaters (sessions chosen will be based on availability)**



2025 SPRING SCHEDULE

May 20 - June 15, 2025

Monday	Tuesday		Wednesday
Meadows W	Meadows E	Meadows W	Kinsmen
<i>May 26 - Meadows E</i>	<i>June 3 & 10 - Mill Woods B</i>	<i>June 3 & 10 - Mill Woods A</i>	
4:15-4:30 - Edge SENIOR	4:00-4:15 - Edge SENIOR	4:15-4:30 - Edge INTERMEDIATE A & B	4:00-4:45 - Freeskate SENIOR
4:30-5:15 - Freeskate SENIOR	4:15-5:15 - Freeskate SENIOR	4:30-5:15 - Freeskate INTERMEDIATE A & B	4:45-5:00 - Group SENIOR JUNIOR
5:15-5:30 - FLOOD	5:15-5:30 - Group	Note: Revised schedule June 3 & 10	5:00-5:45 - Freeskate JUNIOR
5:30-6:15 - Freeskate JUNIOR	SENIOR INTERMEDIATE A & B 5:30-5:45 - FLOOD		5:45-6:00 - FLOOD
6:15-6:30 - Group JUNIOR INTERMEDIATE A & B	5:45-6:30 - Freeskate O12/ADULT		6:00-6:45 CANSKATE
6:30-7:15 - Freeskate INTERMEDIATE A & B	6:30-7:15 CANSKATE		6:45-7:30 CANSKATE
			6:45-7:45 GATEWAY ACADEMY
OFF ICE			
Monday	Tuesday		Wednesday
4:30-5:15 - Off-Ice JUNIOR	5:45-6:30 - Off-Ice SENIOR	5:45-6:30 - Off-Ice INTERMEDIATE A & B	5:10-5:55 - Off-Ice SENIOR
5:15-6:00 - Off-Ice INTERMEDIATE A & B	6:45-7:15 - Off-Ice O12/ADULT	6:00-6:30 - Off-Ice GATEWAY ACADEMY	6:00-6:30 - Off-Ice JUNIOR
5:30-6:15 - Off-Ice SENIOR			

Thursday	Friday	Saturday	Sunday
Meadows E	Meadows W (morning) E (afternoon)	Meadows E	Meadows E
<i>June 5 & 12 - Mill Woods B</i>			
3:00-4:00 - Open ALL CATEGORIES	Meadows W 6:30-7:30 am - Open ALL CATEGORIES	4:45-5:30 - Freeskate JUNIOR	1:30-2:15 GATEWAY ACADEMY
4:00-5:00 - Freeskate STAR O12 A INTERMEDIATE A & B		5:30 - 5:45 - Group JUNIOR INTERMEDIATE A & B	2:15-3:00 STARPREP / ADULT LTS
5:00-5:15 - Edge STAR O12 A INTERMEDIATE A & B	Meadows E	5:45-6:30 - Freeskate INTERMEDIATE A & B	3:00-3:15 - FLOOD
5:15-5:30 - FLOOD	4:00-4:45 - Freeskate JUNIOR	6:30-6:45 - FLOOD	3:15-4:00 CANSKATE
5:30-6:15 - Freeskate SENIOR	4:45-5:00 - Edge JUNIOR INTERMEDIATE A & B	6:45-7:30 - Freeskate SENIOR	4:00-4:45 CANSKATE
6:15-6:30 - Edge SENIOR	5:00-5:45 - Freeskate INTERMEDIATE A & B	7:30-7:45 - Edge SENIOR	4:45-5:00 - FLOOD
	5:45-6:00 - FLOOD		5:00-5:45 CANSKATE
	6:00-7:00 - Freeskate SENIOR		
	7:00-7:15 - Edge SENIOR		
	7:15-8:00 - Freeskate O12/ADULT		
OFF ICE			
Thursday	Friday	Saturday	Sunday
4:30-5:15 - Off-Ice SENIOR	5:15-5:45 - Off-Ice JUNIOR	4:00-4:30 - Off-Ice *JUNIOR	12:30-1:15 GATEWAY ACADEMY
5:30-6:15 - Off-Ice STAR O12 A INTERMEDIATE A & B	5:00-5:45 - Off-Ice SENIOR	5:45-6:30 - Off-Ice SENIOR	
	6:00-6:45 - Off-Ice INTERMEDIATE A & B	6:00-6:15 - Off-Ice *JUNIOR	
		6:45-7:30 - Off-Ice INTERMEDIATE A & B	

*NOTE: Juniors have two off-ice sessions